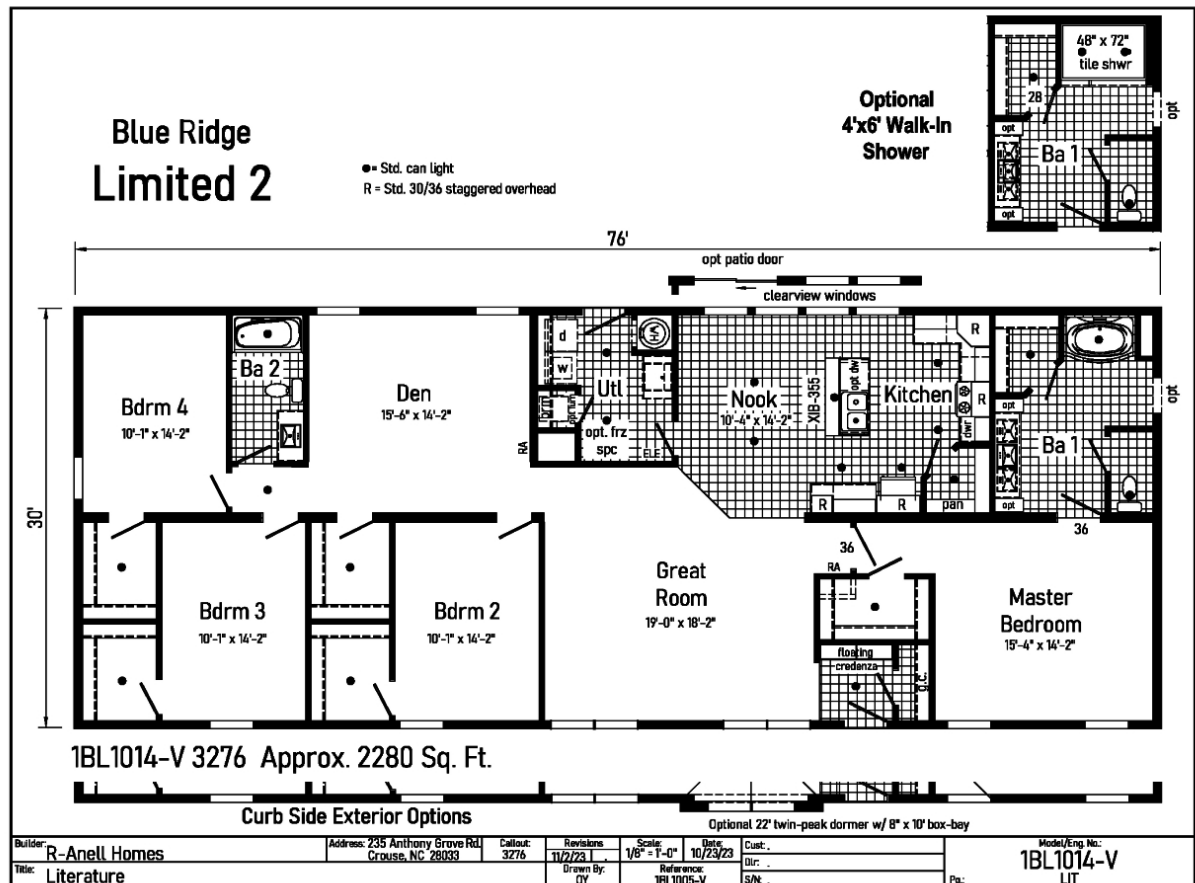


PRINTABLE INFO SHEET

Series: Blue Ridge Limited 2
Model: 1BL1014-V Blue Ridge
Limited 2



About This Model

Style: Ranch / Bedrooms: 4 / Bathrooms: 2 / Square Feet: 2280

CUSTOMER CONTACT

Notes:

PRINTABLE INFO SHEET



Series: Blue Ridge Limited 2
Model: 1BL1014-V Blue Ridge Limited 2

Standards & Features

INTERIOR

Primed Smooth Drywall Throughout
Flat Ceiling Throughout
Smooth Ceiling
8'-0" Ceiling Height
Take Away Carpet Protected with Shaw
Stain Safety
5# Carpet Pad
Tackstrip Carpet Installation
No-Wax Vinyl Floor Coverings by
Congoleum
Recessed 6" LED Lighting
6-Panel Pre-Hung Doors
Mortise Door Hinges
Metal Interior Passage Sets
Door Stops
Smoke Detectors with Battery
Back-Up
Wire Shelving in Guest Closet & Utility Room
2 1/4" Window & Door Trim
White Painted Mouldings Throughout
Laminate Countertops with Laminate Edging
4" Laminate Backsplash
KITCHEN
Stainless Steel 33x19x7 Sink
Brushed Nickel Single Lever Faucet
USB II Receptacle
18 CF Refrigerator
Deluxe Free Standing Electric Range

CABINETRY

Evermore Custom Cabinetry
(KCMA Certified)
Hardwood Mission Cabinet Doors w/
Full Overlay
Hardwood Cabinet Face Frames & Stiles
Brushed Nickel Cabinet Hardware
Concealed Cabinet Hinges
Soft Close Cabinet Doors
Dovetail Drawers w/ Soft Close Guides
36" Wall Cabinets with Crouse Crown to
8'-0" Ceiling Height
Adjustable Shelves in Wall Cabinets
Adjustable Center Shelf in Base Cabinets
Standard Islands in Most Models
Base Shelf in Vanities
36" High Vanities

BEDROOMS

Switched Receptacles
Egress Window Each Bedroom
Wire Shelves in all Closets
30" Interior Passage Doors
Recessed 4" LED Light in All Walk-In Closets
Privacy Sets in all Bedrooms

BATHS

60" x 42" Fiberglass Garden Tub w/
Curved Front and Full Surround in Bath 1
60" One-Piece Fiberglass Tub/Shower
in 2nd Bath
One-Piece Fiberglass Shower with
Glass Door in Glamour Baths

CUSTOMER CONTACT

Notes:

PRINTABLE INFO SHEET



Series: Blue Ridge Limited 2
Model: 1BL1014-V Blue Ridge Limited 2

Standards & Features (continued)

BEDROOMS (continued)

Tub Overflows
1.6 Gallon Per Flush Elongated Toilets
China Stool, Tank, and Lid
w/ soft close seats
Square China Sinks with Overflows and Pop-Up Drains
Lighted Vent Fan in Each Bath
LED Lights over Vanities
Brushed Nickel Faucets
Anti-Scald Valves on Showers
Privacy Sets in all Bathrooms
In-Wall Toilet Riser

UTILITIES

200 AMP Electrical Service
Arc Fault Circuit Breakers
Plumb and Wire for Washer
Wire and Vent for Dryer
40 Gallon Electric Water Heater with Pan
6-Panel Furnace Door
Air Ready Electric Furnace w/Coil Cabinet
Fiberglass Heat Ducts
Copper Wiring Throughout
Main Water Line Shut-Off Valve
Water Shut-Off Valves -Where Accessible
One Exterior Water Faucet
Uponor Plumbing System
Recessed Dryer Vent Box - Where Available
Drain Lines Stubbed Through Floor
Complete Heat System
Insulated Hot Water Lines and P-Traps

INSULATION

R-30 Fiberglass Insulation in Floor
R-19 Fiberglass Insulation in Walls
R-38 Avg. Blown Insulation in Ceiling

EXTERIOR

Gatsby Light at Front and Rear Door
Two GFI-Protected Exterior Receptacles
Vinyl Dutch Lap Siding
O.S.B. Sheathing Under Siding
5/12 Roof Pitch
10" or 12" Overhangs & Eaves (Depending on Model)
Architectural Shingles, 30 Year
Ridgevent Roof Ventilation System
36" Fiberglass 6-Panel Front & Rear Doors with Deadbolt Locks
Vinyl Insulated Windows with Low-E Glass
15" Raised Panel Shutters on Front Door Side
Wind Wrap
Vapor Barrier

CONSTRUCTION

2x10 Floor System with 3/4" T&G O.S.B. Floor Decking
2x6 Exterior Walls
2x4 Marriage Walls
20# Roof Load Design
82 1/2" Window Headers
90 Mile Exposure B Wind Load Design

CUSTOMER CONTACT

Notes:

PRINTABLE INFO SHEET



Series: Blue Ridge Limited 2
Model: 1BL1014-V Blue Ridge
Limited 2

Standards & Features (continued)

CONSTRUCTION (continued)

(TN)
115 Mile Exposure B Wind Load Design
(NC-SC-VA-WV)

BLUE RIDGE LIMITED

*White 3 1/2"

Ceiling Cove Moulding Throughout

*Vinyl Entry Foyer

*30/36 Staggered Overhead Cabinets

*2 5/8" Cabinet Crown

*Structured Flow Brushed Nickel Faucets
Throughout

*Ceiling Lights in Bedrooms

*Perimeter Heat - Boots & Registers Only

*Return Air Box with Grill(s) in Wall Thru Floor

*Lillian Wall Mount Light over Vanities

CUSTOMER CONTACT

Notes:
