

PRINTABLE INFO SHEET

Series: Blue Ridge MAX
Model: B3852445 Grandview Max



About This Model

Style: Ranch / Bedrooms: 3 / Bathrooms: 2 / Square Feet: 1470

CUSTOMER CONTACT

Notes:

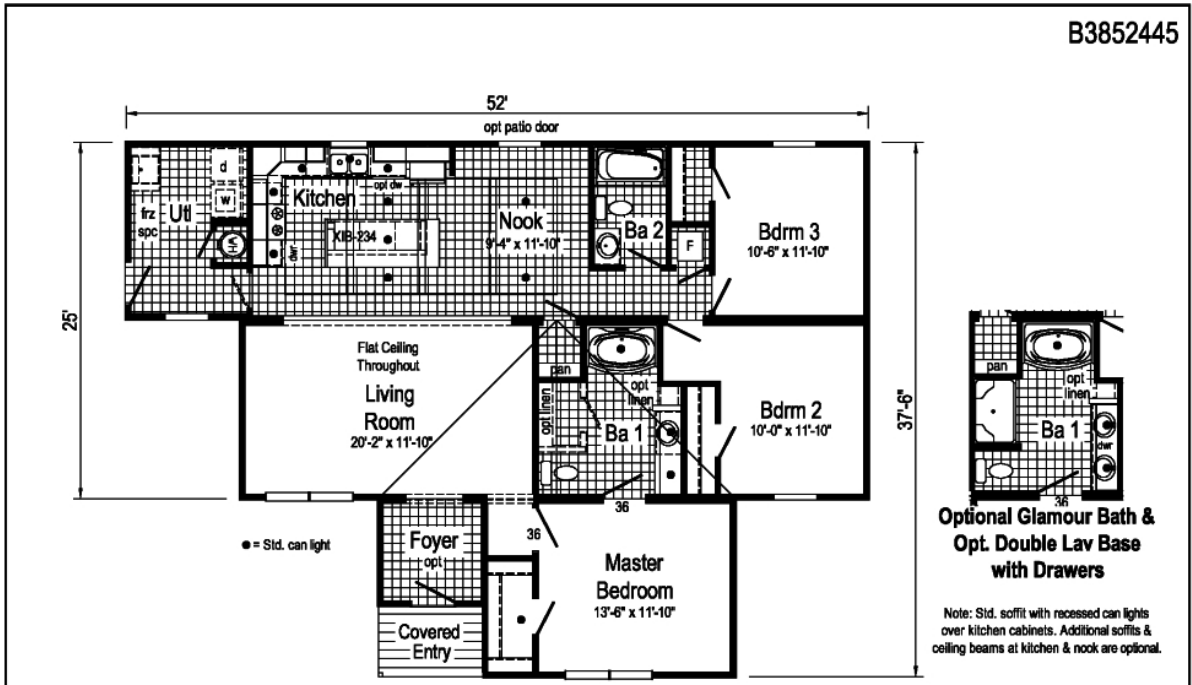
PRINTABLE INFO SHEET



Series: Blue Ridge MAX

Model: B3852445 Grandview Max

Floorplan



Grandview Max 38

B3852445 3852/44 Approx. 1470 Sq. Ft.

Builder: R-Anell Housing Group, LLC - Subsidiary of The Commodore Corp.	Callout: 3852444	Revisions: 1-10-17	Scale: 1/8" = 1'-0"	Date: 5-4-2015	Drawn By: BF	Reference: B3852441	Model/Erp. No.: B3852445
Title: Literature	Date: 10-12-15	Number: 10-13-15					Fig: LIT

CUSTOMER CONTACT

Notes:

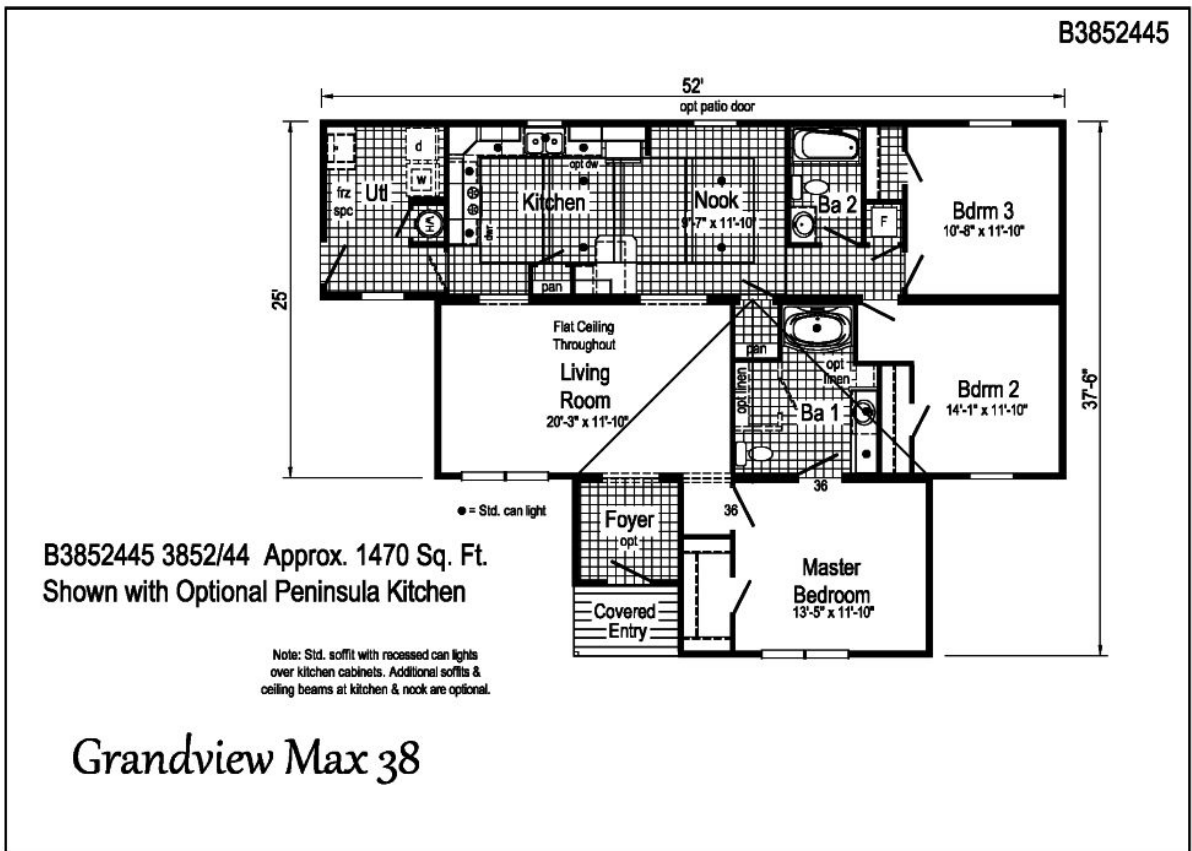
PRINTABLE INFO SHEET



Series: Blue Ridge MAX

Model: B3852445 Grandview Max

Floorplan



Builder: R-Anell Housing Group, LLC - Subsidiary of The Commodore Corp.	Callout: 385244	Revisions:	Scale: 1/8" = 1'-0"	Date: 5-4-15	Cont: -	Model/Eng. No.: B3852445
Title: Literature		Date: 10-12-15 10-13-15	Drawn By: BF	Reference: B3852441	Dir: - S/N: -	Pg: LIT PAGE 2

CUSTOMER CONTACT

Notes:

PRINTABLE INFO SHEET



Series: Blue Ridge MAX

Model: B3852445 Grandview Max

Standards & Features

INTERIOR

- Primed Smooth Drywall Throughout
- Flat Ceiling Throughout
- Smooth Ceiling
- 8'0" Ceiling Height
- Live Wire Carpet Protected with Shaw
- Stain Safety
- Rebond Carpet Pad
- Tackstrip Carpet Installation
- No-Wax Vinyl Floor Coverings by Congoleum
- Langford 3-Arm Dining Room Light
- Recessed 6" LED Lighting in Nook
- 6-Panel Pre-Hung Doors
- Mortise Door Hinges
- Metal Interior Passage Sets
- Door Stops
- Smoke Detectors with Battery
- Back-Up
- Wire Shelving in Guest Closet & Utility Room
- 2 1/4" Window & Door Trim
- White Painted Mouldings Throughout
- Laminate Countertops with Laminate Edging
- 4" Laminate Backsplash

CABINETRY

- Evermore Custom Cabinetry (KCMA Certified)
- Hardwood Mission Cabinet Doors w/ Full Overlay
- Hardwood Cabinet Face Frames & Stiles

CABINETRY (continued)

- Brushed Nickel Cabinet Hardware
- Concealed Cabinet Hinges
- Dovetail Drawers w/ Undermount Drawer Guides
- 30" Wall Cabinets
- Adjustable Shelves in Wall Cabinets
- Adjustable Center Shelf in Base Cabinets
- Standard Islands in Most Models
- Base Shelf in Vanities
- 36" High Vanities

BEDROOMS

- Switched Receptacles
- Egress Window Each Bedroom
- Wire Shelves in all Walk-In Closets
- Wire Shelving in Secondary Closets
- 30" Interior Passage Doors
- Switched Recessed 4" LED Light in All Walk-In Closets
- Privacy Sets in all Bedrooms
- KITCHEN**
- Stainless Steel 33x19x7 Sink
- Empire Brushed Nickel Single Lever Faucet
- USB Receptacle
- Deluxe Free Standing Electric Range

BATHS

- 60" x 42" Fiberglass Garden Tub in Master Bath
- 60" One-Piece Fiberglass Tub/Shower in 2nd Bath
- One-Piece Fiberglass Shower with Glass Door in Glamour Baths
- Tub Overflows

CUSTOMER CONTACT

Notes: _____

PRINTABLE INFO SHEET



Series: Blue Ridge MAX

Model: B3852445 Grandview Max

Standards & Features (continued)

BATHS (continued)

- 1.6 Gallon Per Flush Elongated Toilets
- China Stool, Tank and Lid
- China Sinks with Overflows and Pop-Up Drains
- Lighted Vent Fan in Each Bath
- Soffit w/ Recessed LED Lights over Vanity in Master Bath
- Langford 2-Arm Vanity Light
- Empire Brushed Nickel Faucets
- Anti-Scald Valves on Showers
- Privacy Sets in all Bathrooms
- In-Wall Toilet Riser

UTILITIES

- 200 AMP Electrical Service
- Arc Fault Circuit Breakers
- Plumb and Wire for Washer
- Wire and Vent for Dryer
- 40 Gallon Electric Water Heater with Pan
- 6-Panel Furnace Door
- Air Ready Electric Furnace
- Fiberglass Heat Ducts
- Copper Wiring Throughout
- Main Water Line Shut-Off Valve
- Water Shut-Off Valves Where Accessible
- One Exterior Water Faucet
- Uponor Plumbing System
- Recessed Dryer Vent Box - Where Available
- Drain & Gas Lines Stubbed Through Floor
- Complete Heat System

INSULATION

- R-19 Fiberglass Insulation in Floor
- R-13 Fiberglass Insulation in Walls & 25/38 Wide Homes
- R- 19 Fiberglass Insulation in Walls & 28/32/42 Wide Homes
- R-31 Avg. Blown Insulation in Ceiling

EXTERIOR

- Patina Lantern Light at Front Door
- Square Lantern Light at Rear Door
- Two GFI-Protected Exterior Receptacles
- Vinyl Dutch Lap Siding
- O.S.B. Sheathing Under Siding
- 5/12 Roof Pitch
- 10" or 12" Overhangs & Eaves (Depending on Model)
- 3-Tab Shingles
- Ridgevent Roof Ventilation System
- 38x82 Fiberglass 6-Panel Front & Rear Doors with Deadbolt Locks
- Vinyl Insulated Windows with Low-E Glass
- 15" Raised Panel Shutters on Front Door Side
- Wind Wrap
- Vapor Barrier

CONSTRUCTION

- 2x10 Transverse Floor System with 3/4" T&G O.S.B. Floor Decking
- 2x4 Exterior Walls & 25/38 Wide Homes
- 2x6 Exterior Walls & 28/32/42 Wide Homes
- 2x4 Marriage Walls

CUSTOMER CONTACT

Notes: _____

PRINTABLE INFO SHEET

Series: Blue Ridge MAX

Model: B3852445 Grandview Max



Standards & Features (continued)

CONSTRUCTION (continued)

90 Mile Exposure C Wind Load Design

20# Roof Load Design

82 1/2" Window Headers

Virginia Built Homes

R-30 Fiberglass Insulation in Floor

R-19 Fiberglass Insulation in Wall

R-38 Avg. Blown Insulation in Ceiling

Foam Gaskets at Switches & Receptacles on Exterior Walls

Insulated Hot Water Lines

Deleted Factory Installed Heat Ducts and Boots

CUSTOMER CONTACT

Notes:
