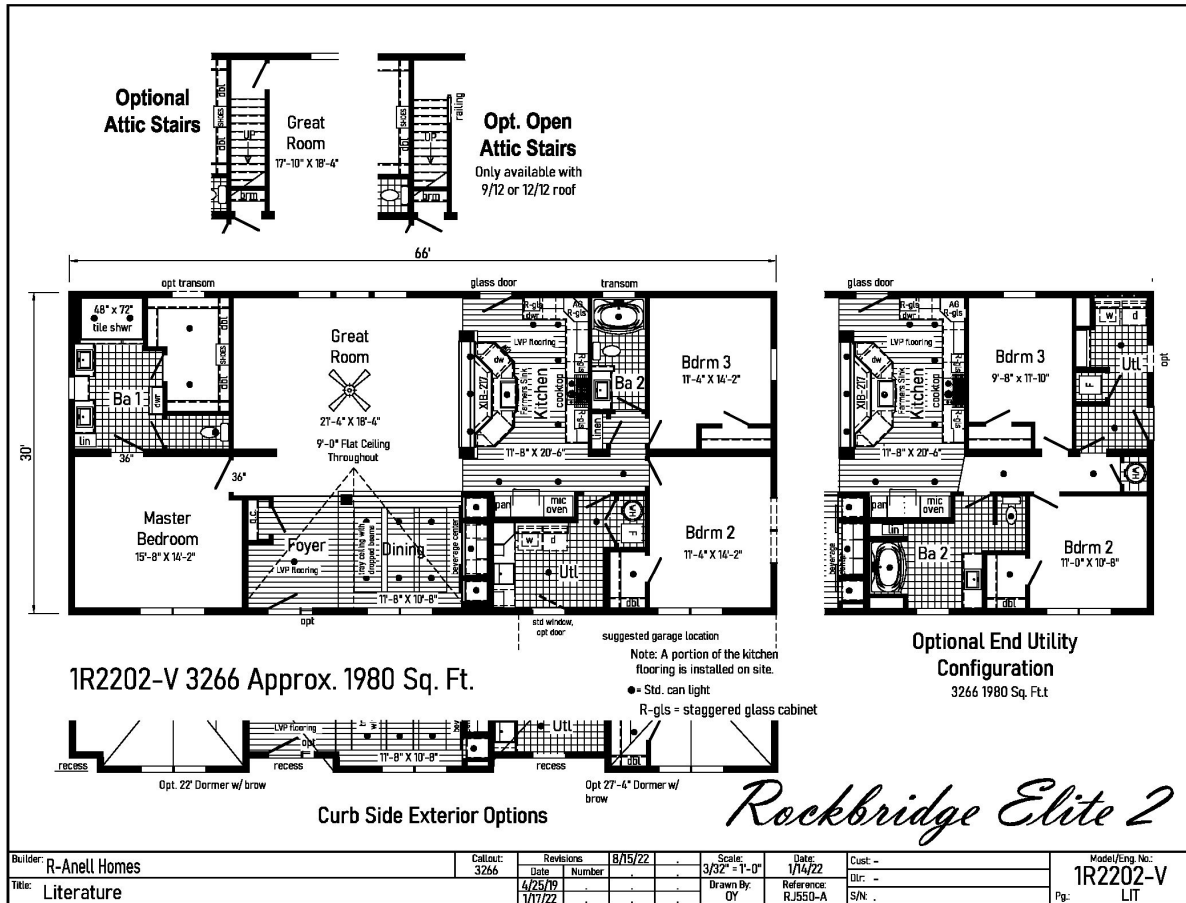


PRINTABLE INFO SHEET



Series: Rockbridge Elite
Model: 1R2202-V Elite 2



About This Model

Style: Ranch / Bedrooms: 3 / Bathrooms: 2 / Square Feet: 1980

CUSTOMER CONTACT

Notes:

PRINTABLE INFO SHEET



Series: Rockbridge Elite

Model: 1R2202-V Elite 2

Standards & Features

INTERIOR

- Primed Smooth Drywall Throughout
- Flat Ceiling Throughout
- Coveless Smooth Ceiling ing
- 9'-0" Ceiling Height with 68" Windows
- 25 oz Carpet with ShawGuard Carpet Protector
- 5# Carpet Pad
- Tackstrip Carpet Installation
- Entry Foyer with Vinyl Flooring
- No-Wax Vinyl Floor Coverings by Congoleum
- LVP Flooring Kitchen, Nook, Foyer & Dining (Plan Specific)
- 6" Recessed LED Lighting
- 3 1/4" Window & Door Trim
- 6-Panel Pre-Hung Doors with Mortise Hinges
- White Painted Mouldings Throughout
- Tray Ceiling in Dining Room
- Metal Interior Passage Sets
- Smoke Detectors with Battery Back-Up
- Wire Shelving in Guest Closet & Utility Room
- 2" Window Blinds Throughout
- Nailed on Switch and Recept. Boxes
- Laminate Countertops with Laminate Edging
- 4" Laminate Backsplash
- Crescent Edge Countertops
- Beverage Center - plan specific
- White Ceiling Fan in Living room
- (2) 3-Way Switches in Living Room
- Utility Room Entry Door

CABINETRY

- Evermore Custom Cabinetry (KCMA Certified)
- Hardwood Mission Cabinet Doors with Full Overlay
- Hardwood Cabinet Face Frames
- Brushed Nickel Cabinet Hardware
- Cabinet Pulls on Doors and Knobs on Drawers
- Concealed Cabinet Hinges
- Soft Close Cabinet Doors
- Drawer over Door Cabinetry
- Crown Moulding on Wall Cabinets
- 30"/42" Staggered Wall Cabinets
- Under Cabinet Moulding in Kitchen
- Appliance Garage
- Adjustable Shelves in Wall Cabinets
- Dovetail Drawers w/ Soft Close Guides
- Adjustable Center Shelf in Base Cabinets
- 36" High Bath Vanities with Base Shelf

KITCHEN

- Stainless Steel Farmers Sink with Gooseneck Faucet & Pull Out Sprayer
- USB II Receptacle
- Stainless Steel & Glass Chimney Range Hood
- 24 CuFt Side by Side Stainless Steel Refrigerator
- Built-in Smooth Top Electric Cooktop
- Built-in Single Wall Oven Stainless Steel
- Front Control 4 Cycle Dishwasher Stainless Steel
- Microwave Opening in Pantry
- Island with Stile Framed Panels on Sides & Backs

CUSTOMER CONTACT

Notes:

PRINTABLE INFO SHEET



Series: Rockbridge Elite

Model: 1R2202-V Elite 2

Standards & Features (continued)

KITCHEN (continued)

Full Ceramic Backsplash

BATHS

4x6 Ceramic Tile Shower with Ceiling
Mount and Hand Held Shower Head
Garden Tub in Bath 2 (plan specific)
Tub Overflows
End Drain on Tubs/Showers
1.6 Gallon Per Flush Elongated Toilets
China Stool, Tank, & Lid w/ soft close seats
Square China Sinks with Overflows and
Pop-Up Drains
Lighted Vent Fan in Each Bath
Structured Flow Brushed Nickel Faucets
Single Row Ceramic Tile Backsplash
Anti-Scald Valves on Showers & Tubs
Lillian 2-Light Vanity Fixture
Privacy Lock Sets in all Bathrooms
Transom in Bath 2 (plan specific)

UTILITIES

200 AMP Electrical Service
Arc Fault Circuit Breakers
Plumb and Wire for Washer
Wire and Vent for Dryer
40 Gallon Electric Water Heater with Pan
Air Ready Electric Furnace w/Coil Cabinet
6-Panel Furnace Door
Perimeter Heat, Fiberglass Ducts, &
Return Air System
Copper Wiring Throughout
Main Water Line Shut-Off Valve

UTILITIES (continued)

Water Shut-Off Valves - Where Accessible
One Exterior Water Faucet
Recessed Dryer Vent Box - Where Available
Uponer Plumbing Connections
Drain Lines Stubbed Through Floor
Insulated Hot Water Lines and P-Traps
Complete Heat System
Ceiling Jumper Box HVAC Return
Air System

BEDROOMS

Ceiling Lights
Egress Window Each Bedroom
Double Wire Shelves with Shoe Racks
in Walk-In Closets
Wire Shelving in Secondary Closets
30" Interior Passage Doors
Recessed 4" LED Light in Walk-In
Closets-(2) in Master Closet
Privacy Lock Sets in all Bedrooms
Master Closet Shoe Tower

EXTERIOR

Gatsby Lantern Light at
Front & Rear Door
Two GFI-Protected Exterior Receptacles
Vinyl Dutch Lap Siding
O.S.B. Sheathing Under Siding
5/12 Roof Pitch
10" or 12" Overhangs & Eaves
(Depending on Model)
Architectural Shingles, 30 Year

CUSTOMER CONTACT

Notes:

PRINTABLE INFO SHEET



Series: Rockbridge Elite

Model: 1R2202-V Elite 2

Standards & Features (continued)

EXTERIOR (continued)

Ridgevent Roof Ventilation System

36" Fiberglass 6-Panel Front Door
with Dead Bolt

36" 15 Lite Fiberglass Rear Door
with Dead Bolt

Vinyl Insulated Windows with
Low-E Glass

15" Raised Panel Shutters on Front
Door Side

Wind Wrap

Vapor Barrier

INSULATION

R-30 Fiberglass Insulation in Floor

R-19 Fiberglass Insulation in Walls

R-38 Avg. Blown Insulation in Ceiling

CONSTRUCTION

2x10 Floor System on

16" Centers with 3/4" T&G O.S.B.
Floor Decking**

Toilet Riser in Wall

2x6 Exterior Walls on 16" Centers**

2x4 Interior Walls

2x4 Marriage Walls

88-3/4" Window Headers

20# Roof Load Design

90 Mile Exposure B Wind Load Design
(TN)

115 Mile Exposure B Wind Load Design
(NC-SC-VA-WV)

CUSTOMER CONTACT

Notes:
