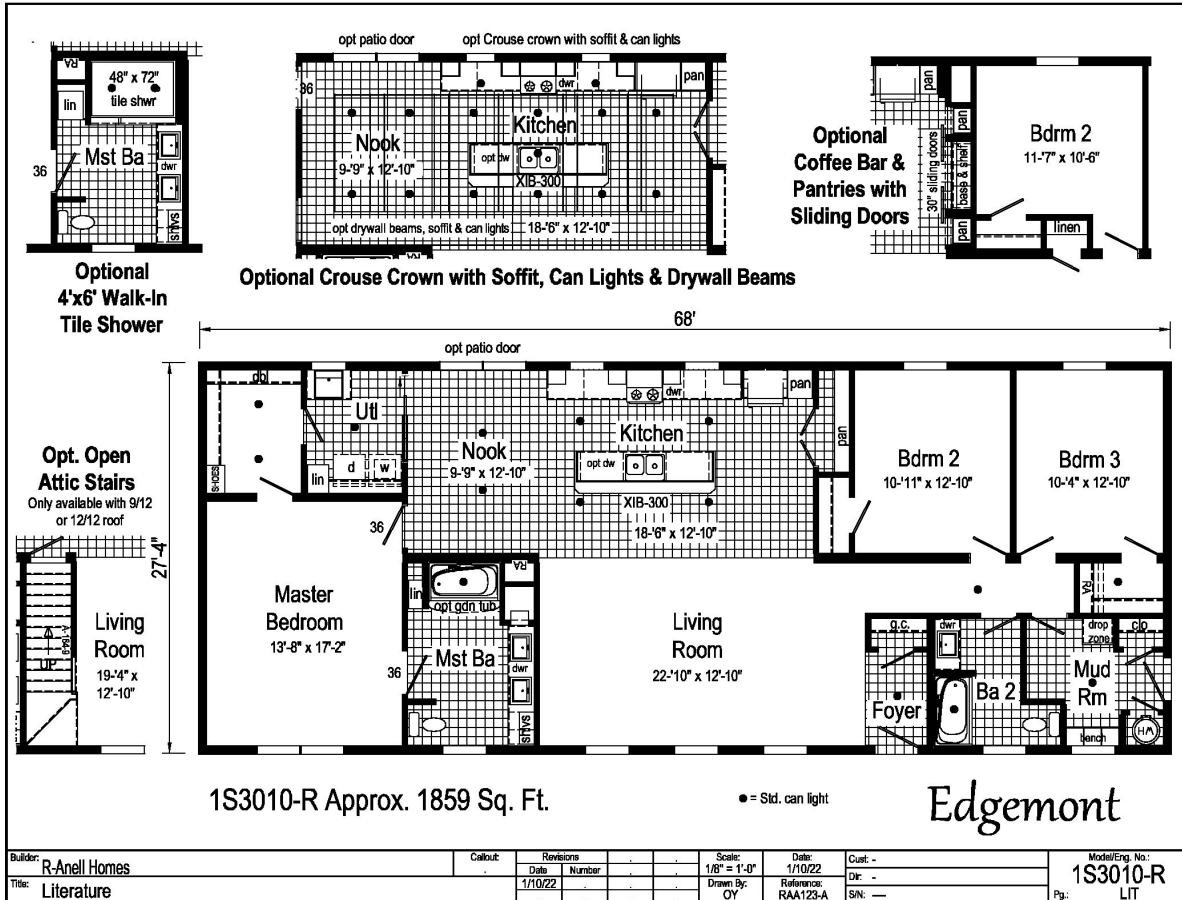


# PRINTABLE INFO SHEET



Series: Summit

Model: 1S3010-R Edgemont



Builder: R-Anell Homes	Callout:	Revisions:	Scale: 1/8" = 1'-0"	Date: 1/10/22	Cost: -	Model/Eng. No.: 1S3010-R
Title: Literature	Date: 1/10/22	Number:	Drawn By: OY	Reference: RAA123-A	Dir: -	Pg.: LIT

## About This Model

Style: Ranch / Bedrooms: 3 / Bathrooms: 2 / Square Feet: 1859

## CUSTOMER CONTACT

Notes:

---



---



---



---

# PRINTABLE INFO SHEET



**Series: Summit**

**Model: 1S3010-R Edgemont**

## Standards & Features

### INTERIOR

- Primed Smooth Drywall Throughout
- Flat Ceiling Throughout
- Smooth Finish Ceiling
- 3 1/2" Ceiling Cove Moulding
- 9'-0" Ceiling Height
- 25 oz. Carpet with ShawGuard
- Carpet Protector
- 5# Carpet Pad
- Wet Areas Endura LVP Flooring
- 6" Recessed LED Lighting
- Pre-Hung Doors w/ Mortise Hinges
- Craftsman White 5-Panel Interior Doors
- Metal Interior Passage Sets
- Smoke Detectors with Battery Back-Up
- Wire Shelving in Closets
- Craftsman White Painted Mouldings
- Square Stairwell Railing & Posts
- Laminate Countertops with Crescent Edging
- Laminate Backsplash

### KITCHEN

- Recessed 6" LED Lighting
- 30" Black Deluxe Free-Standing Electric Range
- Power Range Hood with Light
- 18 Cubic Foot, Black No-Frost Refrigerator
- USB II Receptacle
- 33x22x8 Double Bowl Sink
- Brushed Nickel Coil Spring
- GooseNeck Faucet

### CABINETRY

- Evermore Custom Cabinetry (KCMA Certified)
- Hardwood Mission Cabinet Doors with Full Overlay
- Hardwood Cabinet Face Frames
- Brushed Nickel Cabinet Hardware
- Concealed Cabinet Hinges
- Dovetail Drawers w/ Soft Close Guides
- Soft Close Cabinet Doors
- Kitchen Island w/ 3" Stile Framed Panels on Sides & Back
- Lined Overhead Cabinets
- Crown Moulding on Overhead Cabinets
- Hardwood Undercabinet Moulding in Kitchen
- 42" Overhead Cabinets
- Adjustable Shelves in Overhead Cabinets
- Bumped Out Kitchen Sink Cabinet
- Base Shelf in Vanities
- 36" High Bath Vanities

### BEDROOMS

- Ceiling Lights
- Egress Window in Each Bedroom
- Wire Shelving in Secondary Closets
- Switched 4" LED Light in All Walk-In Closets
- Shoe Tower in Master Bedroom Closet

### BATHS

- 60" One-Piece Fiberglass Tub/Showers with Ceramic Tile Edge
- One-Piece Fiberglass Shower with

## CUSTOMER CONTACT

Notes: \_\_\_\_\_  
\_\_\_\_\_  
\_\_\_\_\_  
\_\_\_\_\_

# PRINTABLE INFO SHEET



**Series: Summit**

**Model: 1S3010-R Edgemont**

## Standards & Features (continued)

### BEDROOMS (continued)

- Ceramic Tile Edge and Glass Door in Glamour Baths
- Fiberglass Soaker Tub in Glamour Baths
- Tub Overflows
- 1.6 Gallon Per Flush Elongated Toilets
- China Stool, Tank, & Lid w/ soft close seat
- Square China Sinks with Overflows and Pop-Up Drains
- Lillian Vanity Fixture
- Lighted Vent Fan in Each Bath
- Structured Flow Brush Nickel Faucets
- Anti-Scald Valves on Showers

### UTILITIES

- 200 AMP Electrical Service
- Arc Fault Circuit Breakers
- Wire for Thermostat
- Plumb and Wire for Washer
- Wire and Vent for Dryer
- Perimeter Boots & Registers
- Box Air Return System Through Floor
- 50 Gallon Electric Water Heater with Pan
- Insulated Hot Water Lines and P-Traps
- Copper Wiring Throughout
- Main Water Line Shut-Off Valve
- Water Shut-Off Valves - Where Accessible
- Drain Lines Stubbed Though Floor
- One Exterior Water Faucet
- Recessed Dryer Vent Box - Where Available

### INSULATION

- R-19 Fiberglass Insulation in Walls

### INSULATION (continued)

- R-38 Avg. Blown Insulation in Ceiling

### EXTERIOR

- Driftwood Lantern Light at Front and Rear Door
- Two GFI-Protected Exterior Receptacles
- Vinyl Dutch Lap Siding
- Shutters on Front Door Side
- O.S.B. Sheathing
- 7/12 Roof Pitch
- 12" Overhangs & Eaves
- 10" Overhangs & Eaves - 32W Models
- Ridgevent Roof Ventilation System
- 36" Fiberglass 1/2 Lite Prairie Grid
- Front Door w/ Dead Bolt
- 36" Fiberglass 6-Panel Rear Door w/ Dead Bolt
- MI 62" Single Hung Low-E Windows w/ Prairie Grids
- Wind Wrap
- Vapor Barrier
- Architectural Shingles, 30 Year

### CONSTRUCTION

- 2x10 Floor System on
- 16"Centers with 3/4" T&G
- O.S.B. Floor Decking\*\*
- Toilet Riser in Wall
- 2x6 Exterior Walls
- 2x4 Interior Walls
- 2x4 Marriage Walls
- Uponer Plumbing Connections

## CUSTOMER CONTACT

Notes:

---

---

---

---

## **PRINTABLE INFO SHEET**

**Series: Summit**

**Model: 1S3010-R Edgemont**



## **Standards & Features (continued)**

### **CONSTRUCTION (continued)**

88" Window Headers

20# Roof Load Design

90 MPH Exposure B Wind Zone

(TN)

115 MPH Exposure B Wind Zone

(NC-SC-VA-WV)

## **CUSTOMER CONTACT**

Notes:

---

---

---

---