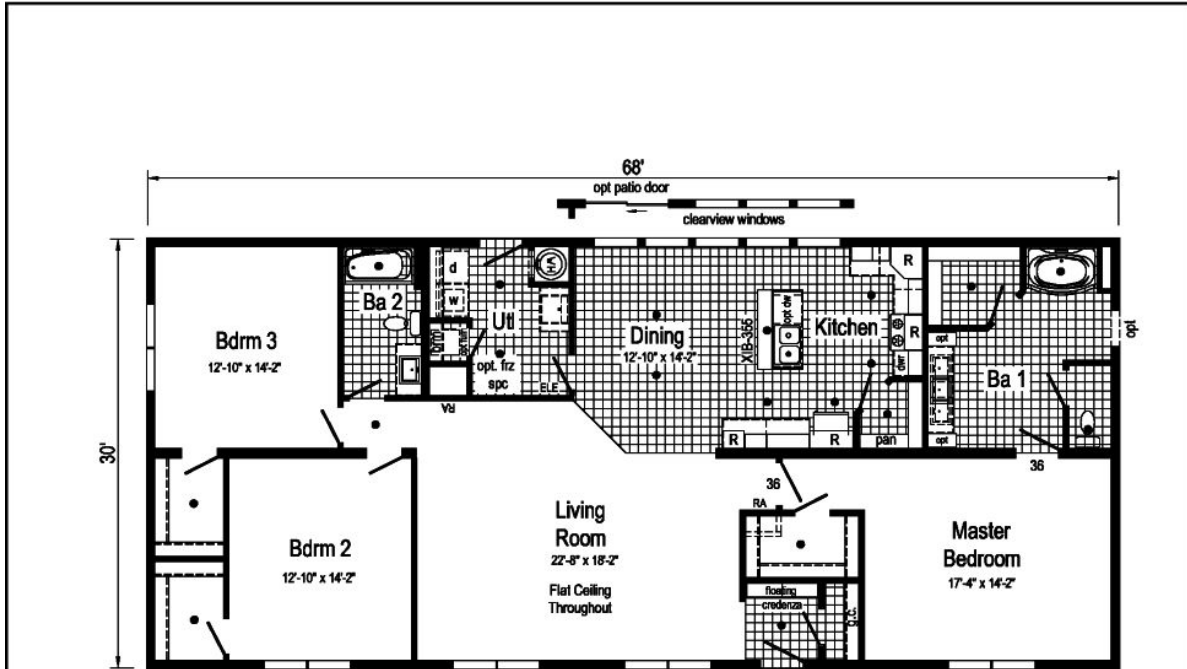


PRINTABLE INFO SHEET



Series: Blue Ridge Limited 2
 Model: 1BL1006-V Blue Ridge Limited 2



1BL1006-V 3268 Approx. 2040 Sq. Ft.

Blue Ridge Limited

Builder: R-Anell Homes	Callout: 3268	Revisions:	Scale: 1/8" = 1'-0"	Date: 12/01/2021	Cont.:	Model/Eng. No.: 1BL1006-V
Title: Literature	Drawn By: OY	References: NONE			Dir.:	LIT
					SN: ---	Page:

About This Model

Style: Ranch / Bedrooms: 3 / Bathrooms: 2 / Square Feet: 2040

CUSTOMER CONTACT

Notes: _____

PRINTABLE INFO SHEET



Series: Blue Ridge Limited 2
Model: 1BL1006-V Blue Ridge Limited 2

Standards & Features

INTERIOR

- Primed Smooth Drywall Throughout
 - Flat Ceiling Throughout
 - Smooth Ceiling
 - 8'-0" Ceiling Height
 - Take Away Carpet Protected with Shaw Stain Safety
 - 5# Carpet Pad
 - Tackstrip Carpet Installation
 - No-Wax Vinyl Floor Coverings by Congoleum
 - Recessed 6" LED Lighting
 - 6-Panel Pre-Hung Doors
 - Mortise Door Hinges
 - Metal Interior Passage Sets
 - Door Stops
 - Smoke Detectors with Battery Back-Up
 - Wire Shelving in Guest Closet & Utility Room
 - 2 1/4" Window & Door Trim
 - White Painted Mouldings Throughout
 - Laminate Countertops with Laminate Edging
 - 4" Laminate Backsplash
- KITCHEN**
- Stainless Steel 33x19x7 Sink
 - Brushed Nickel Single Lever Faucet
 - USB II Receptacle
 - 18 CF Refrigerator
 - Deluxe Free Standing Electric Range

CABINETRY

- Evermore Custom Cabinetry (KCMA Certified)
- Hardwood Mission Cabinet Doors w/ Full Overlay
- Hardwood Cabinet Face Frames & Stiles
- Brushed Nickel Cabinet Hardware
- Concealed Cabinet Hinges
- Soft Close Cabinet Doors
- Dovetail Drawers w/ Soft Close Guides
- 36" Wall Cabinets with Crouse Crown to 8'-0" Ceiling Height
- Adjustable Shelves in Wall Cabinets
- Adjustable Center Shelf in Base Cabinets
- Standard Islands in Most Models
- Base Shelf in Vanities
- 36" High Vanities

BEDROOMS

- Switched Receptacles
- Egress Window Each Bedroom
- Wire Shelves in all Closets
- 30" Interior Passage Doors
- Recessed 4" LED Light in All Walk-In Closets
- Privacy Sets in all Bedrooms

BATHS

- 60" x 42" Fiberglass Garden Tub w/ Curved Front and Full Surround in Bath 1
- 60" One-Piece Fiberglass Tub/Shower in 2nd Bath
- One-Piece Fiberglass Shower with Glass Door in Glamour Baths

CUSTOMER CONTACT

Notes: _____

PRINTABLE INFO SHEET



Series: Blue Ridge Limited 2
Model: 1BL1006-V Blue Ridge Limited 2

Standards & Features (continued)

BEDROOMS (continued)

- Tub Overflows
- 1.6 Gallon Per Flush Elongated Toilets
- China Stool, Tank ,and Lid
- w/ soft close seats
- Square China Sinks with Overflows and Pop-Up Drains
- Lighted Vent Fan in Each Bath
- LED Lights over Vanities
- Brushed Nickel Faucets
- Anti-Scald Valves on Showers
- Privacy Sets in all Bathrooms
- In-Wall Toilet Riser

UTILITIES

- 200 AMP Electrical Service
- Arc Fault Circuit Breakers
- Plumb and Wire for Washer
- Wire and Vent for Dryer
- 40 Gallon Electric Water Heater with Pan
- 6-Panel Furnace Door
- Air Ready Electric Furnace w/Coil Cabinet
- Fiberglass Heat Ducts
- Copper Wiring Throughout
- Main Water Line Shut-Off Valve
- Water Shut-Off Valves -Where Accessible
- One Exterior Water Faucet
- Uponor Plumbing System
- Recessed Dryer Vent Box - Where Available
- Drain Lines Stubbed Through Floor
- Complete Heat System
- Insulated Hot Water Lines and P-Traps

INSULATION

- R-30 Fiberglass Insulation in Floor
- R-19 Fiberglass Insulation in Walls
- R-38 Avg. Blown Insulation in Ceiling

EXTERIOR

- Gatsby Light at Front and Rear Door
- Two GFI-Protected Exterior Receptacles
- Vinyl Dutch Lap Siding
- O.S.B. Sheathing Under Siding
- 5/12 Roof Pitch
- 10" or 12" Overhangs & Eaves (Depending on Model)
- Architectural Shingles, 30 Year
- Ridgevent Roof Ventilation System
- 36" Fiberglass 6-Panel Front & Rear Doors with Deadbolt Locks
- Vinyl Insulated Windows with Low-E Glass
- 15" Raised Panel Shutters on Front Door Side
- Wind Wrap
- Vapor Barrier

CONSTRUCTION

- 2x10 Floor System with 3/4" T&G O.S.B. Floor Decking
- 2x6 Exterior Walls
- 2x4 Marriage Walls
- 20# Roof Load Design
- 82 1/2" Window Headers
- 90 Mile Exposure B Wind Load Design

CUSTOMER CONTACT

Notes:

PRINTABLE INFO SHEET



Series: Blue Ridge Limited 2
Model: 1BL1006-V Blue Ridge Limited 2

Standards & Features (continued)

CONSTRUCTION (continued) (TN)

115 Mile Exposure B Wind Load Design
(NC-SC-VA-WV)

BLUE RIDGE LIMITED

*White 3 1/2"

Ceiling Cove Moulding Throughout

*Vinyl Entry Foyer

*30/36 Staggered Overhead Cabinets

*2 5/8" Cabinet Crown

*Structured Flow Brushed Nickel Faucets

Throughout

*Ceiling Lights in Bedrooms

*Perimeter Heat - Boots & Registers Only

*Return Air Box with Grill(s) in Wall Thru Floor

*Lillian Wall Mount Light over Vanities

CUSTOMER CONTACT

Notes:
