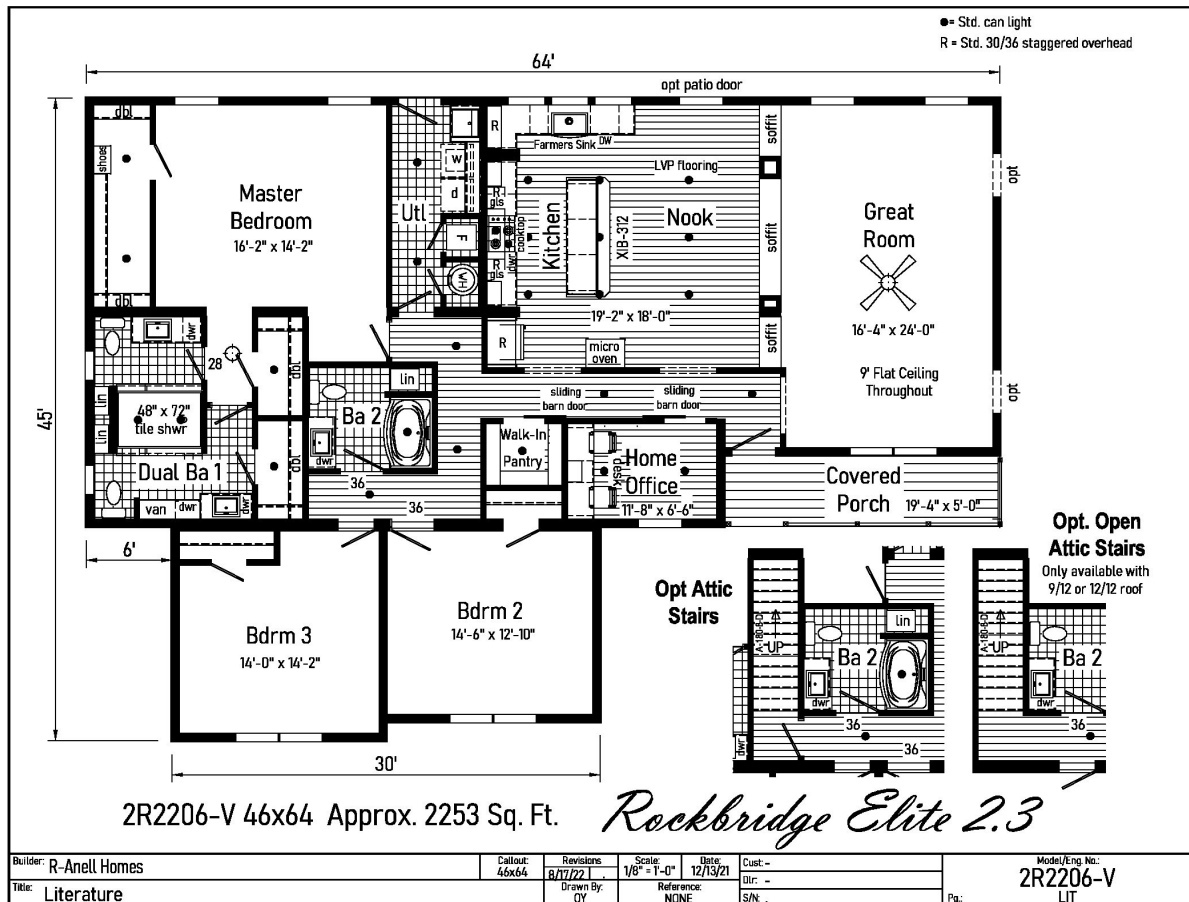


## PRINTABLE INFO SHEET

Series: Rockbridge Elite 2.0

Model: 2R2206-V Elite 2.3



## About This Model

Style: Ranch / Bedrooms: 3 / Bathrooms: 2 / Square Feet: 2253

## CUSTOMER CONTACT

Notes:

---



---



---



---

## PRINTABLE INFO SHEET



**Series: Rockbridge Elite 2.0**

**Model: 2R2206-V Elite 2.3**

## Standards & Features

### INTERIOR

Primed Smooth Drywall Throughout  
Flat Ceiling Throughout  
Coveless Smooth Ceilinging  
9'-0" Ceiling Height with 68" Windows  
25 oz Carpet with  
ShawGuard Carpet Protector  
5# Carpet Pad  
Tackstrip Carpet Installation  
Entry Foyer with Vinyl Flooring  
No-Wax Vinyl Floor Coverings by Congoleum  
LVP Flooring Kitchen, Nook, Foyer & Dining  
(Plan Specific)  
6" Recessed LED Lighting  
3 1/4" Window & Door Trim  
6-Panel Pre-Hung Doors with Mortise Hinges  
White Painted Mouldings Throughout  
Tray Ceiling in Dining Room  
Metal Interior Passage Sets  
Smoke Detectors with Battery Back-Up  
Wire Shelving in Guest Closet & Utility Room  
2" Window Blinds Throughout  
Nailed on Switch and Recept. Boxes  
Laminate Countertops with Laminate Edging  
4" Laminate Backsplash  
Crescent Edge Countertops  
Beverage Center - plan specific  
White Ceiling Fan in Living room  
(2) 3-Way Switches in Living Room  
Utility Room Entry Door

### CABINETRY

Evermore Custom Cabinetry (KCMA Certified)  
Hardwood Mission Cabinet Doors with  
Full Overlay  
Hardwood Cabinet Face Frames  
Brushed Nickel Cabinet Hardware  
Cabinet Pulls on Doors and Knobs on Drawers  
Concealed Cabinet Hinges  
Soft Close Cabinet Doors  
Drawer over Door Cabinetry  
Crown Moulding on Wall Cabinets  
30"/42" Staggered Wall Cabinets  
Under Cabinet Moulding in Kitchen  
Appliance Garage  
Adjustable Shelves in Wall Cabinets  
Dovetail Drawers w/ Soft Close Guides  
Adjustable Center Shelf in Base Cabinets  
36" High Bath Vanities with Base Shelf

### KITCHEN

Stainless Steel Farmers Sink with Gooseneck  
Faucet & Pull Out Sprayer  
USB II Receptacle  
Stainless Steel & Glass Chimney Range Hood  
24 CuFt Side by Side Stainless Steel  
Refrigerator  
Built-in Smooth Top Electric Cooktop  
Built-in Single Wall Oven Stainless Steel  
Front Control 4 Cycle Dishwasher Stainless Steel  
Microwave Opening in Pantry  
Island with Stile Framed Panels on  
Sides & Backs

## CUSTOMER CONTACT

Notes:

---

---

---

---

## PRINTABLE INFO SHEET

**Series: Rockbridge Elite 2.0**

**Model: 2R2206-V Elite 2.3**



## Standards & Features (continued)

### KITCHEN (continued)

Full Ceramic Backsplash

### BATHS

4x6 Ceramic Tile Shower with Ceiling

Mount and Hand Held Shower Head

Garden Tub in Bath 2 (plan specific)

Tub Overflows

End Drain on Tubs/Showers

1.6 Gallon Per Flush Elongated Toilets

China Stool, Tank, & Lid w/ soft close seats

Square China Sinks with Overflows and

Pop-Up Drains

Lighted Vent Fan in Each Bath

Structured Flow Brushed Nickel Faucets

Single Row Ceramic Tile Backsplash

Anti-Scald Valves on Showers & Tubs

Lillian 2-Light Vanity Fixture

Privacy Lock Sets in all Bathrooms

Transom in Bath 2 (plan specific)

### UTILITIES

200 AMP Electrical Service

Arc Fault Circuit Breakers

Plumb and Wire for Washer

Wire and Vent for Dryer

40 Gallon Electric Water Heater with Pan

Air Ready Electric Furnace w/Coil Cabinet

6-Panel Furnace Door

Perimeter Heat, Fiberglass Ducts, &

Return Air System

Copper Wiring Throughout

Main Water Line Shut-Off Valve

### UTILITIES (continued)

Water Shut-Off Valves - Where Accessible

One Exterior Water Faucet

Recessed Dryer Vent Box - Where Available

Uponor Plumbing Connections

Drain Lines Stubbed Through Floor

Insulated Hot Water Lines and P-Traps

Complete Heat System

Ceiling Jumper Box HVAC Return

Air System

### BEDROOMS

Ceiling Lights

Egress Window Each Bedroom

Double Wire Shelves with Shoe Racks

in Walk-In Closets

Wire Shelving in Secondary Closets

30" Interior Passage Doors

Recessed 4" LED Light in Walk-In

Closets-(2) in Master Closet

Privacy Lock Sets in all Bedrooms

Master Closet Shoe Tower

### EXTERIOR

Gatsby Lantern Light at

Front & Rear Door

Two GFI-Protected Exterior Receptacles

Vinyl Dutch Lap Siding

O.S.B. Sheathing Under Siding

5/12 Roof Pitch

10" or 12" Overhangs & Eaves

(Depending on Model)

Architectural Shingles, 30 Year

## CUSTOMER CONTACT

Notes:

## PRINTABLE INFO SHEET

**Series: Rockbridge Elite 2.0**

**Model: 2R2206-V Elite 2.3**



## Standards & Features (continued)

### EXTERIOR (continued)

Ridgevent Roof Ventilation System

36" Fiberglass 6-Panel Front Door

with Dead Bolt

36" 15 Lite Fiberglass Rear Door

with Dead Bolt

Vinyl Insulated Windows with

Low-E Glass

15" Raised Panel Shutters on Front

Door Side

Wind Wrap

Vapor Barrier

### INSULATION

R-30 Fiberglass Insulation in Floor

R-19 Fiberglass Insulation in Walls

R-38 Avg. Blown Insulation in Ceiling

### CONSTRUCTION

2x10 Floor System on

16" Centers with 3/4" T&G O.S.B.

Floor Decking\*\*

Toilet Riser in Wall

2x6 Exterior Walls on 16" Centers\*\*

2x4 Interior Walls

2x4 Marriage Walls

88-3/4" Window Headers

20# Roof Load Design

90 Mile Exposure B Wind Load Design

(TN)

115 Mile Exposure B Wind Load Design

(NC-SC-VA-WV)

## CUSTOMER CONTACT

Notes:

---

---

---

---