

PRINTABLE INFO SHEET

Series: Rockbridge Elite 2.0

Model: 1R2208-V Elite 2.2



About This Model

Style: Ranch / Bedrooms: 3 / Bathrooms: 2 / Square Feet: 2280

CUSTOMER CONTACT

Notes:

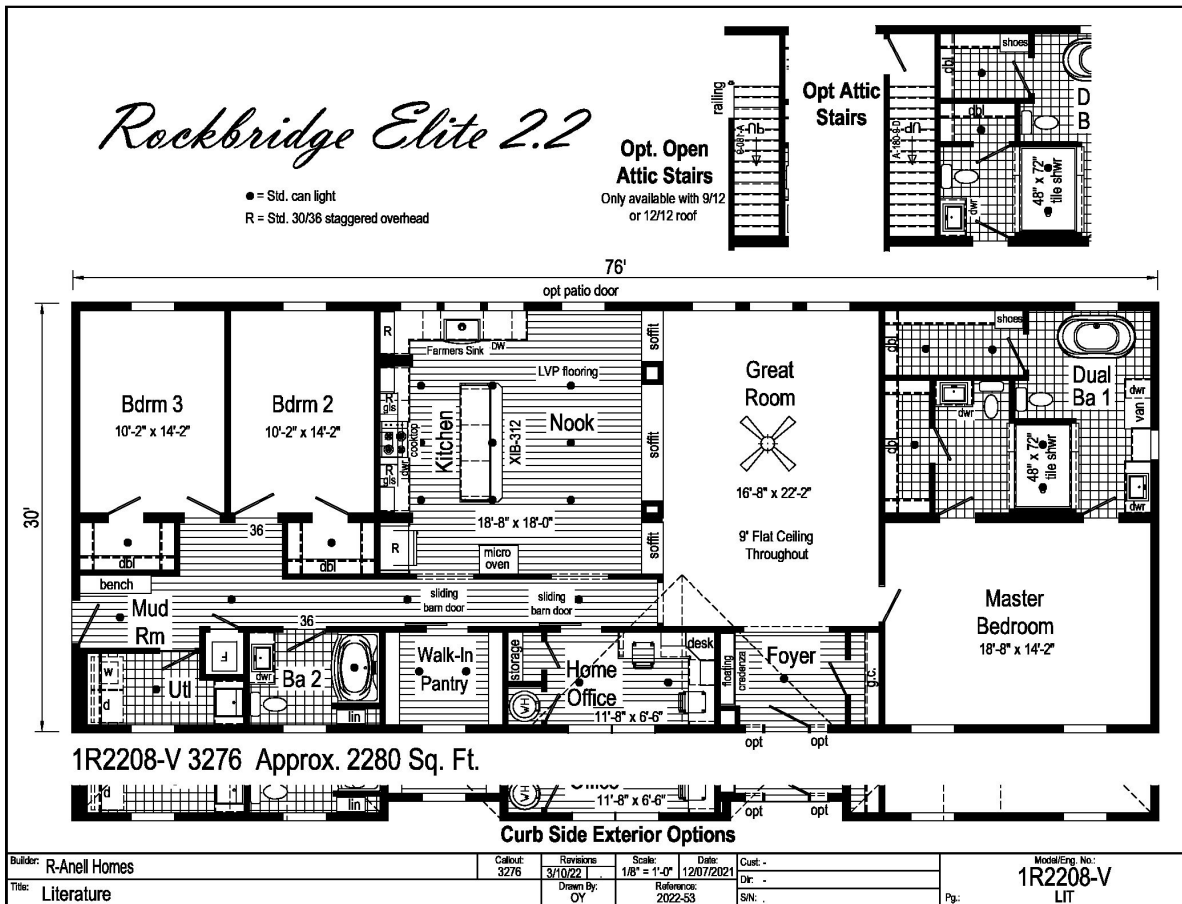
PRINTABLE INFO SHEET

Series: Rockbridge Elite 2.0

Model: 1R2208-V Elite 2.2



Floorplan



CUSTOMER CONTACT

Notes:

PRINTABLE INFO SHEET



Series: Rockbridge Elite 2.0

Model: 1R2208-V Elite 2.2

Standards & Features

INTERIOR

- Primed Smooth Drywall Throughout
- Flat Ceiling Throughout
- Coveless Smooth Ceiling ing
- 9'-0" Ceiling Height with 68" Windows
- 25 oz Carpet with ShawGuard Carpet Protector
- 5# Carpet Pad
- Tackstrip Carpet Installation
- Entry Foyer with Vinyl Flooring
- No-Wax Vinyl Floor Coverings by Congoleum
- LVP Flooring Kitchen, Nook, Foyer & Dining (Plan Specific)
- 6" Recessed LED Lighting
- 3 1/4" Window & Door Trim
- 6-Panel Pre-Hung Doors with Mortise Hinges
- White Painted Mouldings Throughout
- Tray Ceiling in Dining Room
- Metal Interior Passage Sets
- Smoke Detectors with Battery Back-Up
- Wire Shelving in Guest Closet & Utility Room
- 2" Window Blinds Throughout
- Nailed on Switch and Recept. Boxes
- Laminate Countertops with Laminate Edging
- 4" Laminate Backsplash
- Crescent Edge Countertops
- Beverage Center - plan specific
- White Ceiling Fan in Living room
- (2) 3-Way Switches in Living Room
- Utility Room Entry Door

CABINETRY

- Evermore Custom Cabinetry (KCMA Certified)
- Hardwood Mission Cabinet Doors with Full Overlay
- Hardwood Cabinet Face Frames
- Brushed Nickel Cabinet Hardware
- Cabinet Pulls on Doors and Knobs on Drawers
- Concealed Cabinet Hinges
- Soft Close Cabinet Doors
- Drawer over Door Cabinetry
- Crown Moulding on Wall Cabinets
- 30"/42" Staggered Wall Cabinets
- Under Cabinet Moulding in Kitchen
- Appliance Garage
- Adjustable Shelves in Wall Cabinets
- Dovetail Drawers w/ Soft Close Guides
- Adjustable Center Shelf in Base Cabinets
- 36" High Bath Vanities with Base Shelf

KITCHEN

- Stainless Steel Farmers Sink with Gooseneck Faucet & Pull Out Sprayer
- USB II Receptacle
- Stainless Steel & Glass Chimney Range Hood
- 24 CuFt Side by Side Stainless Steel Refrigerator
- Built-in Smooth Top Electric Cooktop
- Built-in Single Wall Oven Stainless Steel
- Front Control 4 Cycle Dishwasher Stainless Steel
- Microwave Opening in Pantry
- Island with Stile Framed Panels on Sides & Backs

CUSTOMER CONTACT

Notes: _____

PRINTABLE INFO SHEET



Series: Rockbridge Elite 2.0

Model: 1R2208-V Elite 2.2

Standards & Features (continued)

KITCHEN (continued)

Full Ceramic Backsplash

BATHS

- 4x6 Ceramic Tile Shower with Ceiling
- Mount and Hand Held Shower Head
- Garden Tub in Bath 2 (plan specific)
- Tub Overflows
- End Drain on Tubs/Showers
- 1.6 Gallon Per Flush Elongated Toilets
- China Stool, Tank, & Lid w/ soft close seats
- Square China Sinks with Overflows and Pop-Up Drains
- Lighted Vent Fan in Each Bath
- Structured Flow Brushed Nickel Faucets
- Single Row Ceramic Tile Backsplash
- Anti-Scald Valves on Showers & Tubs
- Lillian 2-Light Vanity Fixture
- Privacy Lock Sets in all Bathrooms
- Transom in Bath 2 (plan specific)

UTILITIES

- 200 AMP Electrical Service
- Arc Fault Circuit Breakers
- Plumb and Wire for Washer
- Wire and Vent for Dryer
- 40 Gallon Electric Water Heater with Pan
- Air Ready Electric Furnace w/Coil Cabinet
- 6-Panel Furnace Door
- Perimeter Heat, Fiberglass Ducts, &
- Return Air System
- Copper Wiring Throughout
- Main Water Line Shut-Off Valve

UTILITIES (continued)

- Water Shut-Off Valves - Where Accessible
- One Exterior Water Faucet
- Recessed Dryer Vent Box - Where Available
- Uponer Plumbing Connections
- Drain Lines Stubbed Through Floor
- Insulated Hot Water Lines and P-Traps
- Complete Heat System
- Ceiling Jumper Box HVAC Return Air System

BEDROOMS

- Ceiling Lights
- Egress Window Each Bedroom
- Double Wire Shelves with Shoe Racks in Walk-In Closets
- Wire Shelving in Secondary Closets
- 30" Interior Passage Doors
- Recessed 4" LED Light in Walk-In Closets-(2) in Master Closet
- Privacy Lock Sets in all Bedrooms
- Master Closet Shoe Tower

EXTERIOR

- Gatsby Lantern Light at Front & Rear Door
- Two GFI-Protected Exterior Receptacles
- Vinyl Dutch Lap Siding
- O.S.B. Sheathing Under Siding
- 5/12 Roof Pitch
- 10" or 12" Overhangs & Eaves (Depending on Model)
- Architectural Shingles, 30 Year

CUSTOMER CONTACT

Notes:

PRINTABLE INFO SHEET



Series: Rockbridge Elite 2.0

Model: 1R2208-V Elite 2.2

Standards & Features (continued)

EXTERIOR (continued)

Ridgevent Roof Ventilation System

36" Fiberglass 6-Panel Front Door
with Dead Bolt

36" 15 Lite Fiberglass Rear Door
with Dead Bolt

Vinyl Insulated Windows with

Low-E Glass

15" Raised Panel Shutters on Front

Door Side

Wind Wrap

Vapor Barrier

INSULATION

R-30 Fiberglass Insulation in Floor

R-19 Fiberglass Insulation in Walls

R-38 Avg. Blown Insulation in Ceiling

CONSTRUCTION

2x10 Floor System on

16" Centers with 3/4" T&G O.S.B.

Floor Decking**

Toilet Riser in Wall

2x6 Exterior Walls on 16" Centers**

2x4 Interior Walls

2x4 Marriage Walls

88-3/4" Window Headers

20# Roof Load Design

90 Mile Exposure B Wind Load Design

(TN)

115 Mile Exposure B Wind Load Design

(NC-SC-VA-WV)

CUSTOMER CONTACT

Notes:
