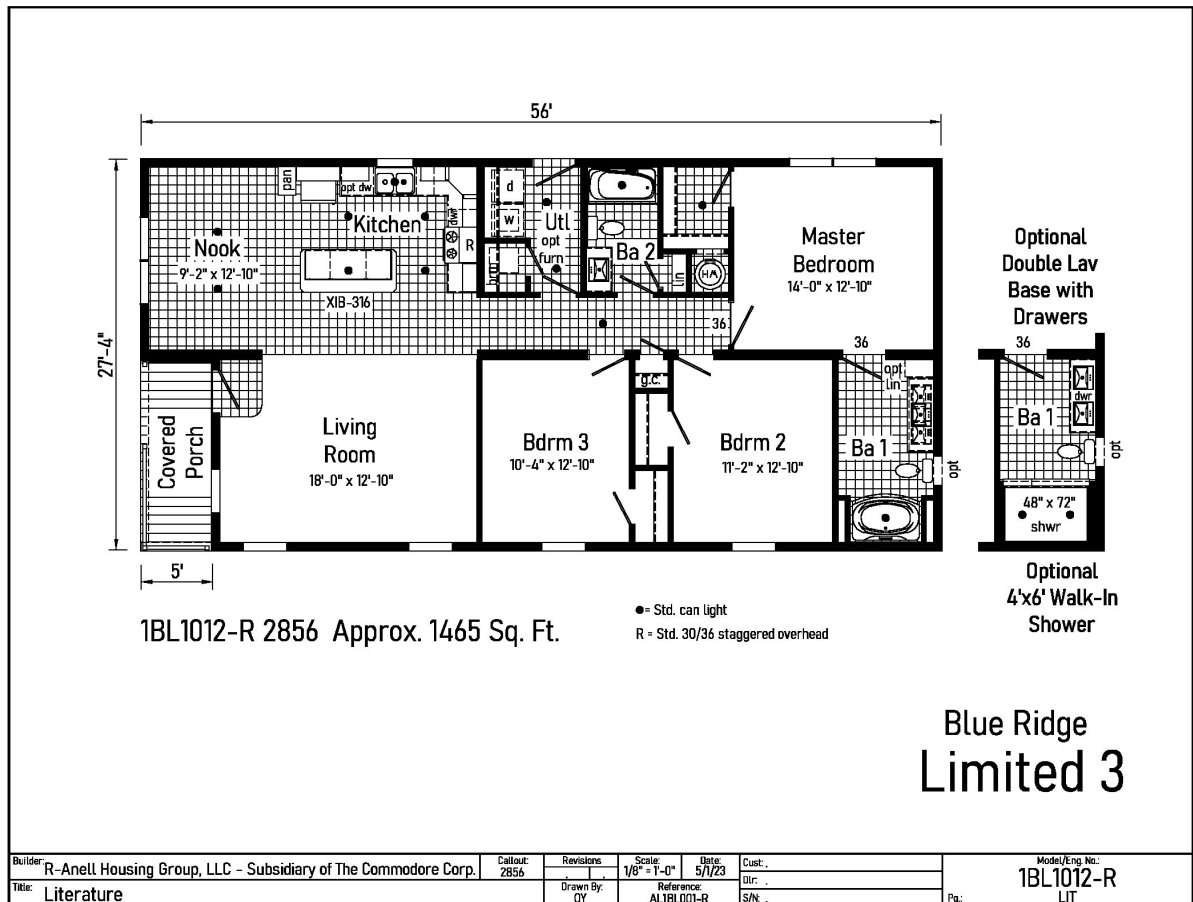


PRINTABLE INFO SHEET

Series: Blue Ridge Limited 3

Model: 1BL1012-R Limited 3



About This Model

Style: Ranch / Bedrooms: 3 / Bathrooms: 2 / Square Feet: 1465

CUSTOMER CONTACT

Notes:

PRINTABLE INFO SHEET



Series: Blue Ridge Limited 3

Model: 1BL1012-R Limited 3

Standards & Features

INTERIOR

Primed Smooth Drywall Throughout
Flat Ceiling Throughout
Smooth Ceiling
8'-0" Ceiling Height
Take Away Carpet Protected with Shaw
Stain Safety
5# Carpet Pad
Tackstrip Carpet Installation
No-Wax Vinyl Floor Coverings by
Congoleum
Recessed 6" LED Lighting
6-Panel Pre-Hung Doors
Mortise Door Hinges
Metal Interior Passage Sets
Door Stops
Smoke Detectors with Battery
Back-Up
Wire Shelving in Guest Closet & Utility Room
2 1/4" Window & Door Trim
White Painted Mouldings Throughout
Laminate Countertops with Laminate Edging
4" Laminate Backsplash

KITCHEN

Stainless Steel 33x19x7 Sink
Brushed Nickel Single Lever Faucet
USB II Receptacle
18 CF Refrigerator
Deluxe Free Standing Electric Range

CABINETRY

Evermore Custom Cabinetry
(KCMA Certified)
Hardwood Mission Cabinet Doors w/
Full Overlay
Hardwood Cabinet Face Frames & Stiles
Brushed Nickel Cabinet Hardware
Concealed Cabinet Hinges
Soft Close Cabinet Doors
Dovetail Drawers w/ Soft Close Guides
36" Wall Cabinets with Crouse Crown to
8'-0" Ceiling Height
Adjustable Shelves in Wall Cabinets
Adjustable Center Shelf in Base Cabinets
Standard Islands in Most Models
Base Shelf in Vanities
36" High Vanities

BEDROOMS

Switched Receptacles
Egress Window Each Bedroom
Wire Shelves in all Closets
30" Interior Passage Doors
Recessed 4" LED Light in All Walk-In Closets
Privacy Sets in all Bedrooms

BATHS

60" x 42" Fiberglass Garden Tub w/
Curved Front and Full Surround in Bath 1
60" One-Piece Fiberglass Tub/Shower
in 2nd Bath
One-Piece Fiberglass Shower with
Glass Door in Glamour Baths

CUSTOMER CONTACT

Notes:

PRINTABLE INFO SHEET

Series: Blue Ridge Limited 3

Model: 1BL1012-R Limited 3



Standards & Features (continued)

BATHS (continued)

Tub Overflows

1.6 Gallon Per Flush Elongated Toilets

China Stool, Tank, and Lid

w/ soft close seats

Square China Sinks with Overflows and

Pop-Up Drains

Lighted Vent Fan in Each Bath

LED Lights over Vanities

Brushed Nickel Faucets

Anti-Scald Valves on Showers

Privacy Sets in all Bathrooms

In-Wall Toilet Riser

UTILITIES

200 AMP Electrical Service

Arc Fault Circuit Breakers

Plumb and Wire for Washer

Wire and Vent for Dryer

40 Gallon Electric Water Heater with Pan

6-Panel Furnace Door

Air Ready Electric Furnace w/Coil Cabinet

Fiberglass Heat Ducts

Copper Wiring Throughout

Main Water Line Shut-Off Valve

Water Shut-Off Valves -Where Accessible

One Exterior Water Faucet

Uponor Plumbing System

Recessed Dryer Vent Box - Where Available

Drain Lines Stubbed Through Floor

Complete Heat System

Insulated Hot Water Lines and P-Traps

INSULATION

R-30 Fiberglass Insulation in Floor

R-19 Fiberglass Insulation in Walls

R-38 Avg. Blown Insulation in Ceiling

EXTERIOR

Gatsby Light at Front and Rear Door

Two GFI-Protected Exterior

Receptacles

Vinyl Dutch Lap Siding

O.S.B. Sheathing Under Siding

5/12 Roof Pitch

10" or 12" Overhangs & Eaves

(Depending on Model)

Architectural Shingles, 30 Year

Ridgevent Roof Ventilation System

36" Fiberglass 6-Panel Front & Rear

Doors with Deadbolt Locks

Vinyl Insulated Windows with

Low-E Glass

15" Raised Panel Shutters on Front

Door Side

Wind Wrap

Vapor Barrier

CONSTRUCTION

2x10 Floor System with

3/4" T&G O.S.B. Floor Decking

2x6 Exterior Walls

2x4 Marriage Walls

20# Roof Load Design

82 1/2" Window Headers

90 Mile Exposure B Wind Load Design

CUSTOMER CONTACT

Notes:

PRINTABLE INFO SHEET

Series: Blue Ridge Limited 3

Model: 1BL1012-R Limited 3



Standards & Features (continued)

CONSTRUCTION (continued)

(TN)

115 Mile Exposure B Wind Load Design

(NC-SC-VA-WV)

****NOTE:** Spacing for Framing Members may vary due to Design Requirements

BLUERIDGE LIMITED ADDITIONAL FEATURES:

*White 3 1/2" Ceiling Cove Moulding Throughout

*Vinyl Entry Foyer

*30/36 Staggered Overhead Cabinets

*2 5/8" Cabinet Crown

*Structured Flow Brushed Nickel Faucets Throughout

Ceiling Lights in Bedrooms

*Perimeter Heat - Boots & Registers Only

*Return Air Box with Grill(s) in Wall Thru Floor

*Lillian Wall Mount Light over Vanities

CUSTOMER CONTACT

Notes:
