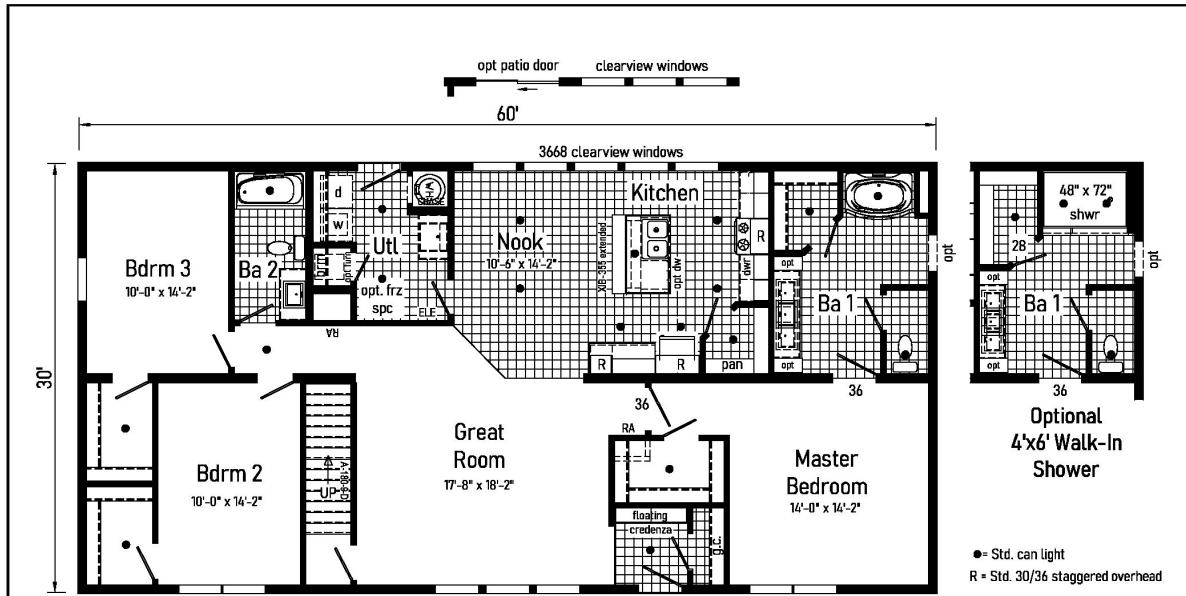


# PRINTABLE INFO SHEET

Series: Blue Ridge Limited Cape  
 Model: 1BLC1002-V Limited Cape



1BLC1002-V 3260 Approx. 1800 Sq. Ft.

Blue Ridge Ltd Edition  
 Cape Series

Builder: R-Anell Homes	Callout: 3260	Revisions:	Scale: 1/8" = 1'-0"	Date: 6/26/23	Cust.:	Model/Eng. No.: 1BLC1002-V
Title: Literature	Drawn By: OY	Reference: AL1BLC1005-V	Dir.:	SN:	Pg.:	LIT

## About This Model

Style: / Bedrooms: 3 / Bathrooms: 2 / Square Feet: 1800

## CUSTOMER CONTACT

Notes:

---



---



---



---

# PRINTABLE INFO SHEET



**Series: Blue Ridge Limited Cape**  
**Model: 1BLC1002-V Limited Cape**

## Standards & Features

### INTERIOR

- Primed Smooth Drywall Throughout
- Flat Ceiling Throughout
- Smooth Ceiling
- 8'-0" Ceiling Height
- Take Away Carpet Protected with Shaw
- Stain Safety
- 5# Carpet Pad
- Tackstrip Carpet Installation
- No-Wax Vinyl Floor Coverings by Congoleum
- Recessed 6" LED Lighting
- 6-Panel Pre-Hung Doors
- Mortise Door Hinges
- Metal Interior Passage Sets
- Door Stops
- Smoke Detectors with Battery
- Back-Up
- Wire Shelving in Guest Closet & Utility Room
- 2 1/4" Window & Door Trim
- White Painted Mouldings Throughout
- Laminate Countertops with Laminate Edging
- 4" Laminate Backsplash

### KITCHEN

- Stainless Steel 33x19x7 Sink
- Brushed Nickel Single Lever Faucet
- USB II Receptacle
- 18 CF Refrigerator
- Deluxe Free Standing Electric Range

### CABINETRY

- Evermore Custom Cabinetry (KCMA Certified)
- Hardwood Mission Cabinet Doors w/ Full Overlay
- Hardwood Cabinet Face Frames & Stiles
- Brushed Nickel Cabinet Hardware
- Concealed Cabinet Hinges
- Soft Close Cabinet Doors
- Dovetail Drawers w/ Soft Close Guides
- 36" Wall Cabinets with Crouse Crown to 8'-0" Ceiling Height
- Adjustable Shelves in Wall Cabinets
- Adjustable Center Shelf in Base Cabinets
- Standard Islands in Most Models
- Base Shelf in Vanities
- 36" High Vanities

### BEDROOMS

- Switched Receptacles
- Egress Window Each Bedroom
- Wire Shelves in all Closets
- 30" Interior Passage Doors
- Recessed 4" LED Light in All Walk-In Closets
- Privacy Sets in all Bedrooms

### BATHS

- 60" x 42" Fiberglass Garden Tub w/ Curved Front and Full Surround in Bath 1
- 60" One-Piece Fiberglass Tub/Shower in 2nd Bath
- One-Piece Fiberglass Shower with Glass Door in Glamour Baths

## CUSTOMER CONTACT

Notes:

---

---

---

---

# PRINTABLE INFO SHEET



**Series: Blue Ridge Limited Cape**  
**Model: 1BLC1002-V Limited Cape**

## Standards & Features (continued)

### BATHS (continued)

- Tub Overflows
- 1.6 Gallon Per Flush Elongated Toilets
- China Stool, Tank ,and Lid
- w/ soft close seats
- Square China Sinks with Overflows and Pop-Up Drains
- Lighted Vent Fan in Each Bath
- LED Lights over Vanities
- Brushed Nickel Faucets
- Anti-Scald Valves on Showers
- Privacy Sets in all Bathrooms
- In-Wall Toilet Riser

### UTILITIES

- 200 AMP Electrical Service
- Arc Fault Circuit Breakers
- Plumb and Wire for Washer
- Wire and Vent for Dryer
- 40 Gallon Electric Water Heater with Pan
- 6-Panel Furnace Door
- Air Ready Electric Furnace w/Coil Cabinet
- Fiberglass Heat Ducts
- Copper Wiring Throughout
- Main Water Line Shut-Off Valve
- Water Shut-Off Valves -Where Accessible
- One Exterior Water Faucet
- Uponor Plumbing System
- Recessed Dryer Vent Box - Where Available
- Drain Lines Stubbed Through Floor
- Complete Heat System
- Insulated Hot Water Lines and P-Traps

### INSULATION

- R-30 Fiberglass Insulation in Floor
- R-19 Fiberglass Insulation in Walls
- R-38 Avg. Blown Insulation in Ceiling

### EXTERIOR

- Gatsby Light at Front and Rear Door
- Two GFI-Protected Exterior Receptacles
- Vinyl Dutch Lap Siding
- O.S.B. Sheathing Under Siding
- 5/12 Roof Pitch
- 10" or 12" Overhangs & Eaves (Depending on Model)
- Architectural Shingles, 30 Year
- Ridgevent Roof Ventilation System
- 36" Fiberglass 6-Panel Front & Rear Doors with Deadbolt Locks
- Vinyl Insulated Windows with Low-E Glass
- 15" Raised Panel Shutters on Front Door Side
- Wind Wrap
- Vapor Barrier

### CONSTRUCTION

- 2x10 Floor System with 3/4" T&G O.S.B. Floor Decking
- 2x6 Exterior Walls
- 2x4 Marriage Walls
- 20# Roof Load Design
- 82 1/2" Window Headers
- 90 Mile Exposure B Wind Load Design

## CUSTOMER CONTACT

Notes:

---

---

---

---

## PRINTABLE INFO SHEET



**Series: Blue Ridge Limited Cape**  
**Model: 1BLC1002-V Limited Cape**

## Standards & Features (continued)

### CONSTRUCTION (continued)

(TN)

115 Mile Exposure B Wind Load Design

(NC-SC-VA-WV)

\*\*NOTE: Spacing for Framing Members may vary due to Design Requirements

### BLUERIDGE LIMITED ADDITIONAL FEATURES:

\*White 3 1/2" Ceiling Cove Moulding Throughout

\*Vinyl Entry Foyer

\*30/36 Staggered Overhead Cabinets

\*2 5/8" Cabinet Crown

\*Structured Flow Brushed Nickel Faucets Throughout

Ceiling Lights in Bedrooms

\*Perimeter Heat - Boots & Registers Only

\*Return Air Box with Grill(s) in Wall Thru Floor

\*Lillian Wall Mount Light over Vanities

## CUSTOMER CONTACT

Notes:

---

---

---

---